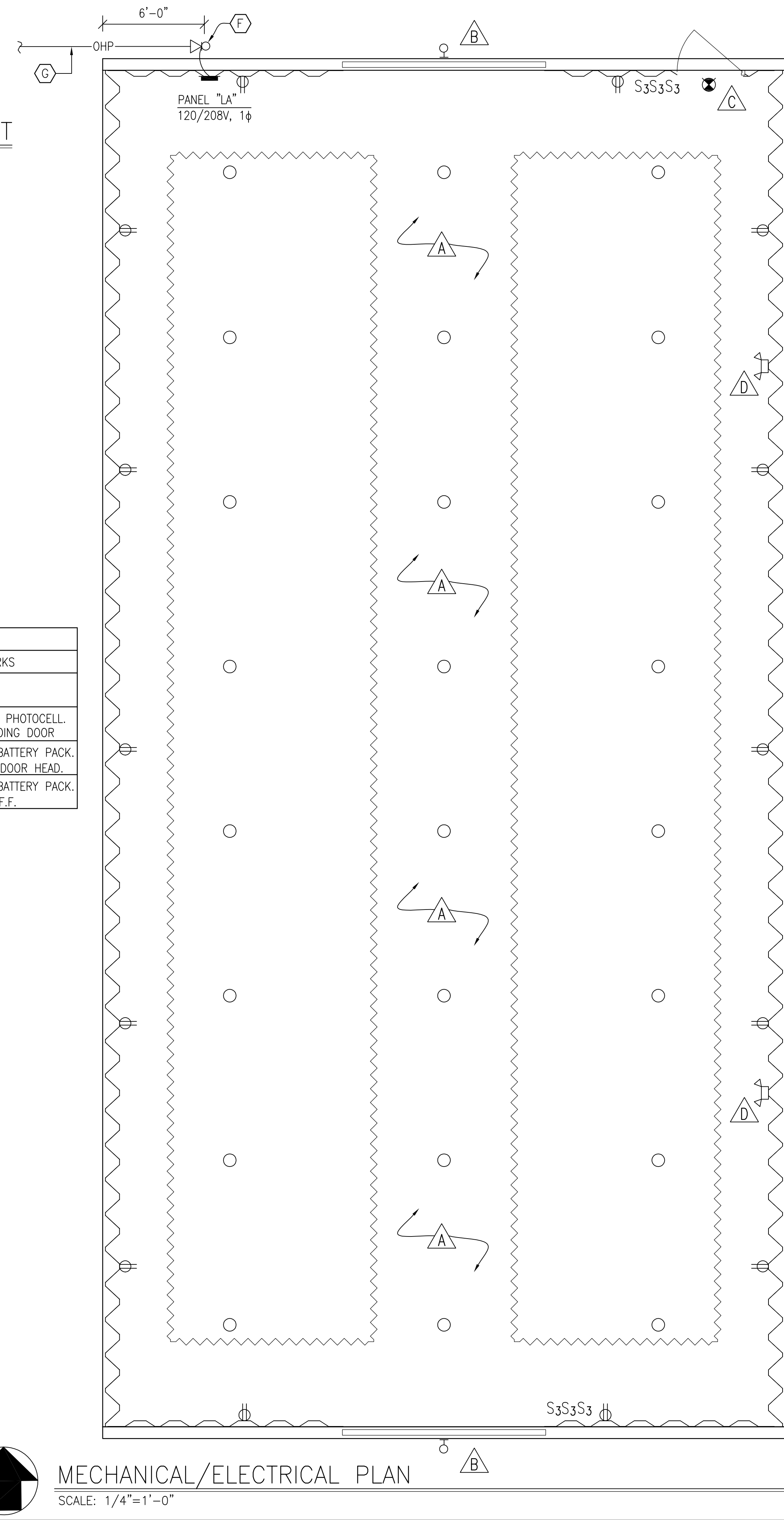


KEY NOTES THIS SHEET

- A. OUTLINE OF PRE-ENGINEERED METAL BUILDING RIBS.
- B. 12' WIDE x 12' HIGH SLIDING DOOR.
- C. 4' WIDE x 7' HIGH PERSONNEL DOOR.
- D. OUTLINE OF BATTING CAGE.
- E. EDGE OF CONCRETE FOUNDATION.
- F. 4" GRS CONDUIT MAST & WEATHERHEAD. SET WEATHERHEAD 18" ABOVE TOP OF BUILDING.
- G. OVERHEAD ELECTRIC SECONDARY BY DOMINION VIRGINIA POWER.

LIGHTING FIXTURE SCHEDULE					
TYPE	DESCRIPTION	VOLTS	LAMP	MOUNTING	REMARKS
A	LOW BAY	208	400W MTL HALIDE	SURF. CLT.	
B	WALL PAK	120	70W HPS	SURF. WALL	W/ INTEGRAL PHOTOCCELL. MT. ABV. SLIDING DOOR
C	EXIT SIGN	120	L.E.D.	SURF. WALL	W/ EMERG. BATTERY PACK. MT. 6" ABV. DOOR HEAD.
D	EGRESS LIGHT	120	—	SURF. WALL	W/ EMERG. BATTERY PACK. MT. 8'-6" A.F.F.



FLOOR PLAN
SCALE: 1/4"=1'-0"

MECHANICAL/ELECTRICAL PLAN
SCALE: 1/4"=1'-0"

NRW
CONSULTING STRUCTURAL ENGINEERS
748 LORD DUNMORE DRIVE, SUITE 101
VIRGINIA BEACH, VIRGINIA 23464
PHONE: (757) 474-0612 FAX: (757) 474-0919

COMMONWEALTH OF VIRGINIA
KEVIN M. ROOMSBURY
No. 17101
PROFESSIONAL ENGINEER

HITTING/PITCHING FACILITY
KEMPSVILLE HIGH SCHOOL
VIRGINIA BEACH, VIRGINIA
PLANS

REVISIONS	
DATE	COMMENTS

1 OF 1
DATE 10/27/06
COMM
A-1
DRAWN KMR
CHECKED KMR
COMP#